

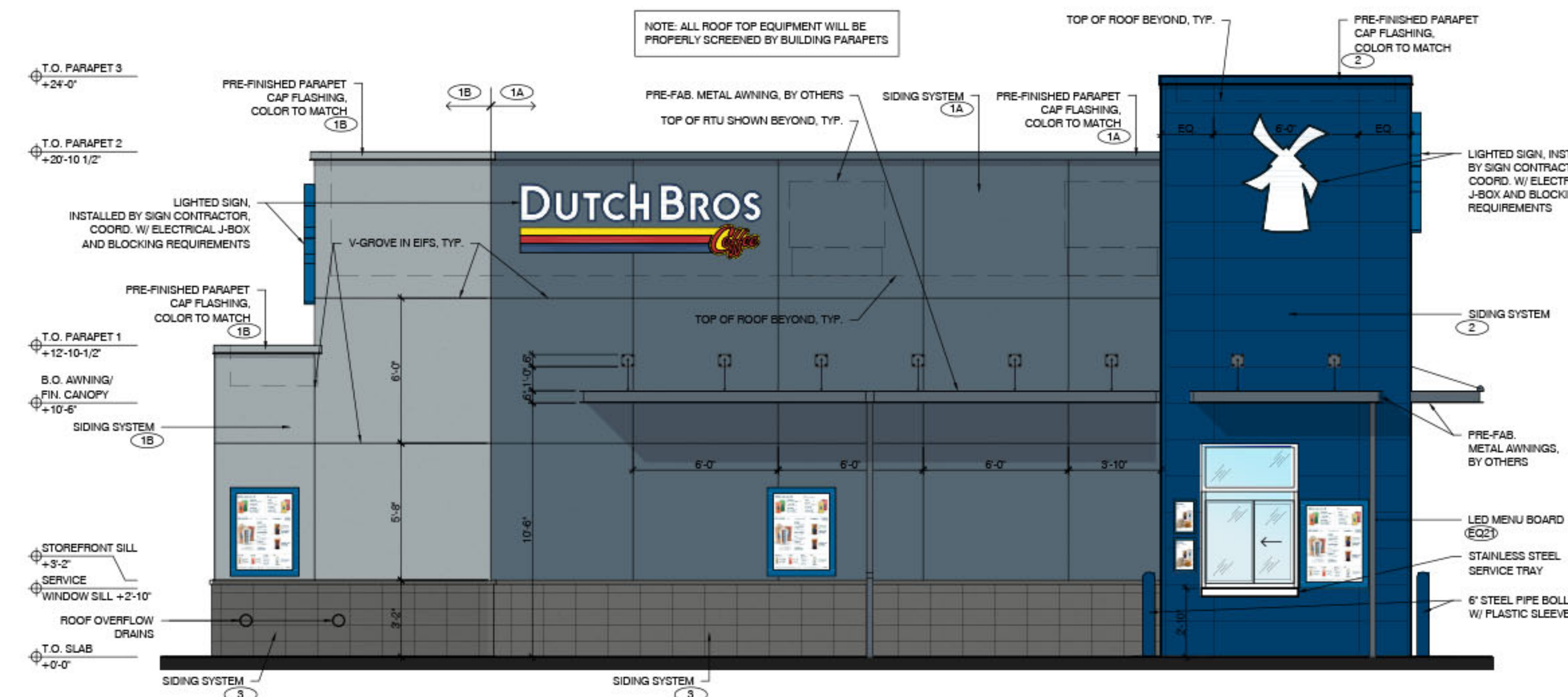
The name DUTCHBROS, and all associated logos, distinctive designs, content, information, and other materials featured, displayed, combined, or used in any way, including but not limited to, the "look and feel" of the establishment and products, all text, images, colors, configurations, graphics, design, illustrations, photographs, and pictures (collectively, the "Materials") are owned by and/or licensed by DB Franchising USA, LLC and are protected by copyright, trademark, trade dress, patent, and/or other intellectual property rights and under competition laws under the United States and foreign laws.

SIDING SCHEDULE - ALTERNATE w/ CANOPY

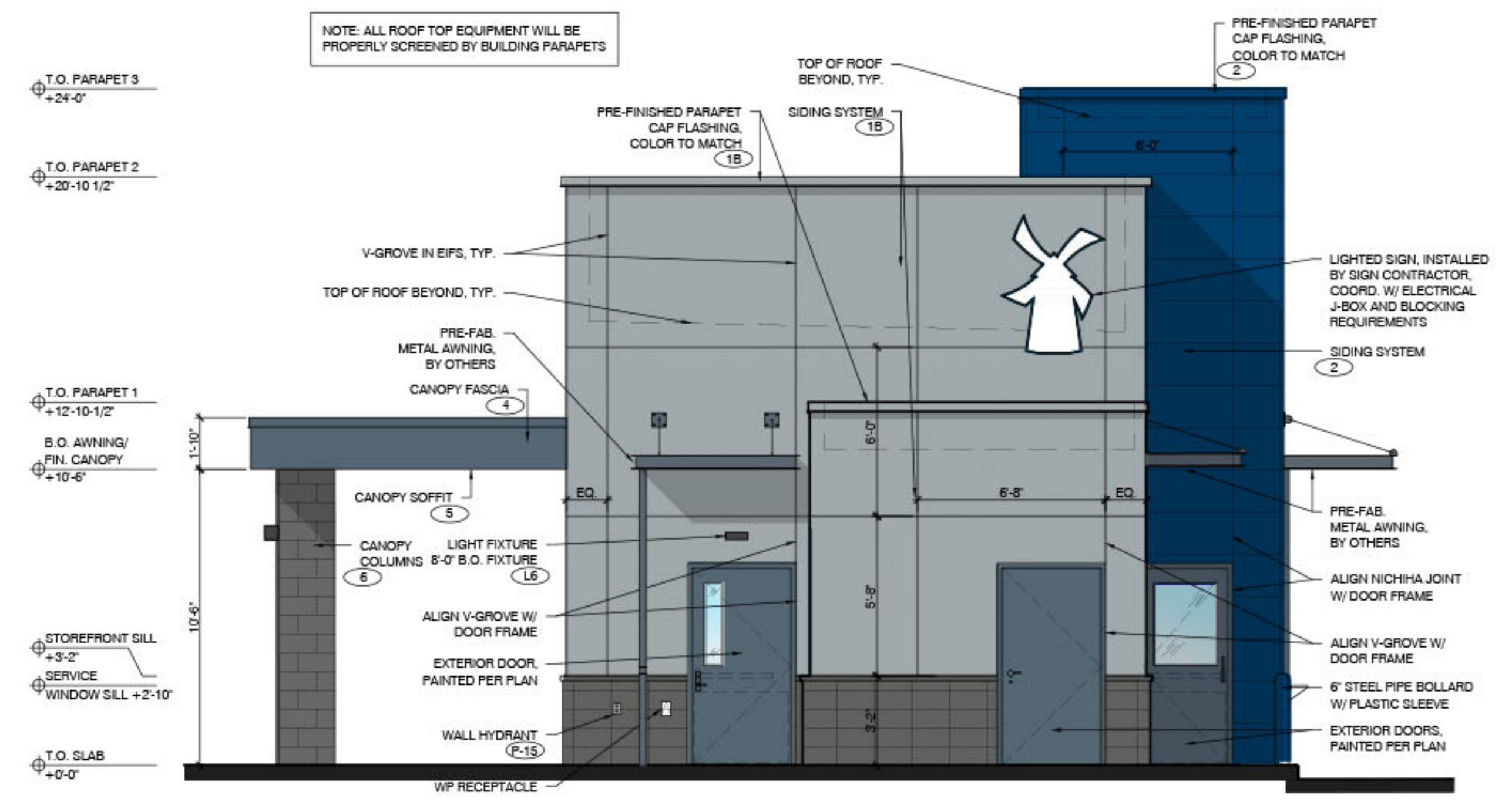
ID TAG	MATERIAL	MANUFACTURER	MODEL	REMARKS
ZONE 1 (BODY)				
1A	EIFS	BASF/ SENERGY	1 1/2" CHANNELED ADHESIVE CI DESIGN SYSTEM	COLOR: BLDG DB DARK GRAY
1B	EIFS	BASF/ SENERGY	1 1/2" CHANNELED ADHESIVE CI DESIGN SYSTEM	COLOR: BLDG DB LIGHT GRAY
ZONE 2 (TOWER)				
2	FIBER CEMENT SIDING	NICHIHA	ILLUMINATION, AWP 1818 w/ FACTORY OUTSIDE CORNERS	COLOR: BLDG DB BLUE
ZONE 3 (BASE)				
3	CMU VENEER AND SILL	WILLAMETTE GRAYSTONE OR APPROVED OTHER	4-8-16, SPLIT FACE	COLOR: CHARCOAL - REVIEW FINAL COLOR SELECTION W/ DB
ZONE 4 (FRAMED CANOPY)				
4	FASCIA	-	METAL FASCIA; FLAT	3 SIDES: COLOR: BLDG DB DARK GRAY
5	SOFFIT	HEWN ELEMENTS	NATURAL NORTHWESTERN SPRUCE	1x8, T&G, 1/8" REVEAL
6	COLUMNS	WILLAMETTE GRAYSTONE OR APPROVED OTHER	4-8-16, SPLIT FACE	COLOR: CHARCOAL - REVIEW FINAL COLOR SELECTION W/ DB



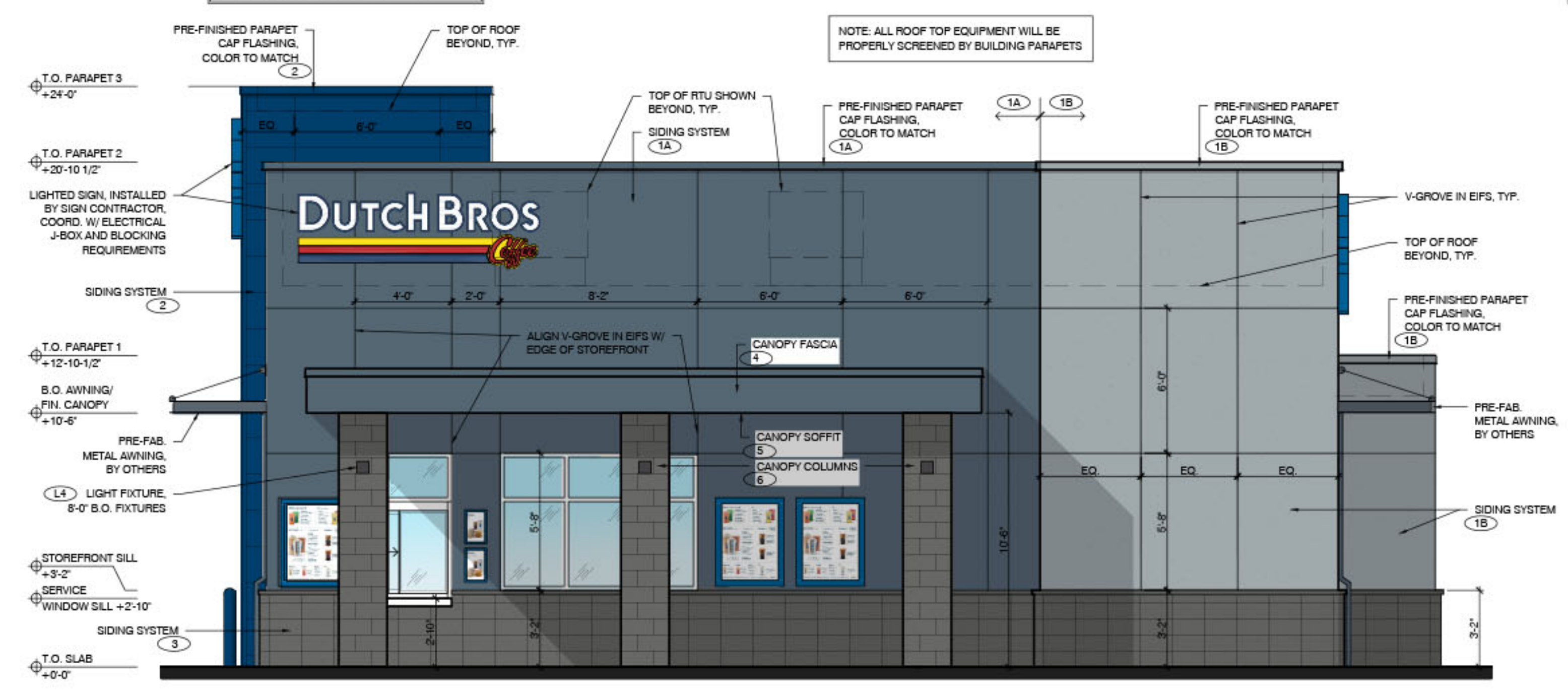
ARCHITECT
 EDIN CORALIC
 9700 MACKENZIE ROAD, STE. 222,
 ST. LOUIS, MO 63123
 p: 314.578.4953
 e: edin@coralicarchitecture.com
STRUCTURAL ENGINEER
 JAMES C. KREHER
 JIM KREHER
 208 N. MAIN STREET,
 COLUMBIA, IL 62236
 p: 618.281.8505
 jimk@kreherengineering.com
MEP ENGINEER
 Case Engineering
 DARRELL R. CASE
 796 MERUS CT.,
 FENTON, MO 63026
 T. 636.349.1600 F. 636.349.1730
 dcase@caseengineeringinc.com



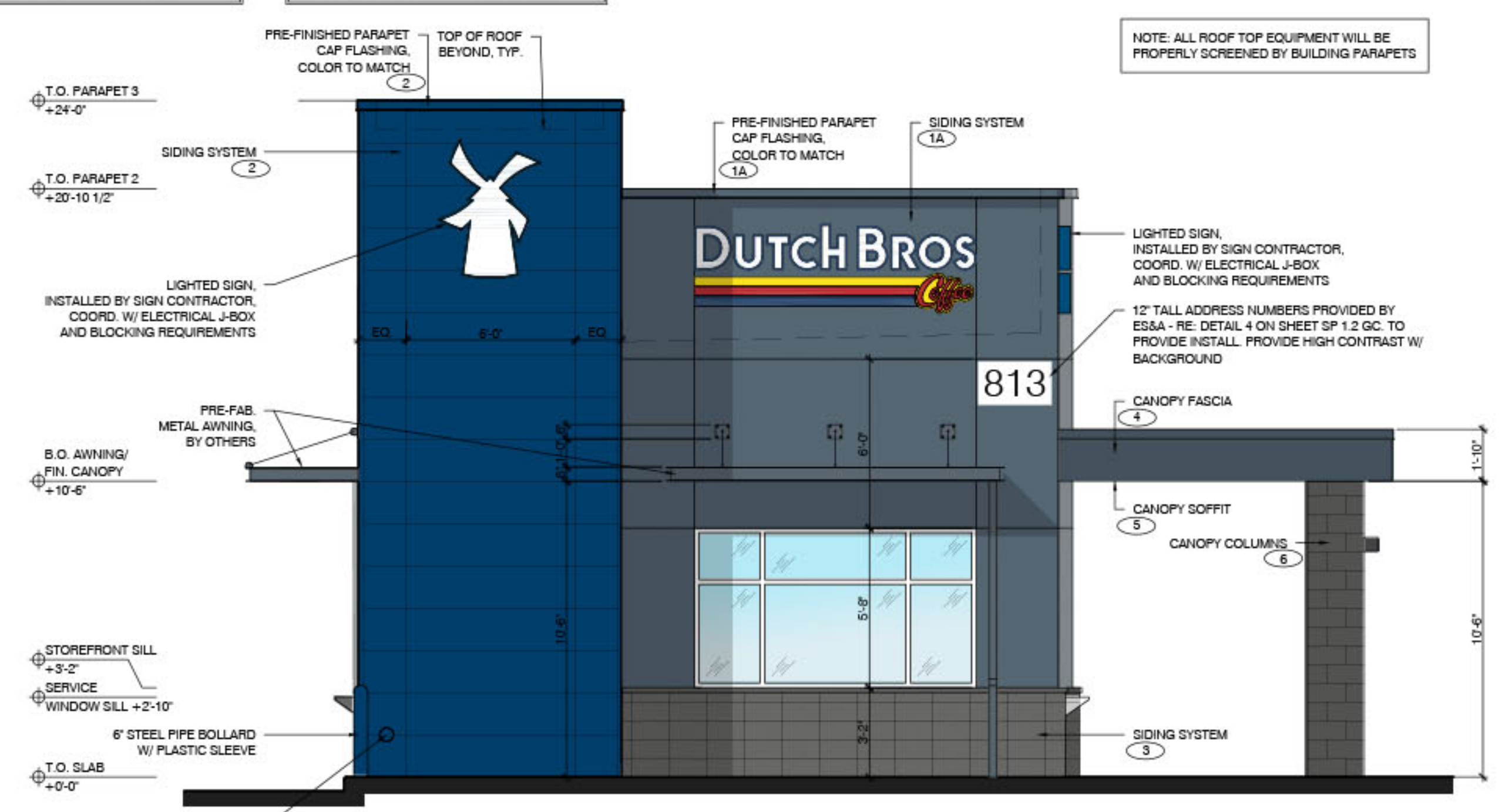
4 **SOUTHEAST ELEVATION - DRIVE-THRU WINDOW**
SCALE: 1/4" = 1'-0"



3 **SOUTHWEST ELEVATION**
SCALE: 1/4" = 1'-0"



2 **NORTHWEST ELEVATION - WALK-UP WINDOW**
SCALE: 1/4" = 1'-0"



1 **NORTHEAST ELEVATION**
SCALE: 1/4" = 1'-0"

Project No: TN0602
 Dutch Bros Coffee -
 New Freestanding Store
 813 S. JAMES CAMPBELL BLVD,
 COLUMBIA, TN 38401
 for Dutch Bros Coffee
 110 SW 4TH ST, GRANITS PASS, OR 97526

ISSUED FOR PERMIT : 3.02.2022

REV. DATE	DESCRIPTION

BUILDING ELEVATIONS

SHEET NUMBER:

A6.1